

# Nightingale Infant and Nursery School

## Weekly Newsletter

### 26.04.2024



#### FLOCK value this week is Listen and Learn

This week has been all about listening and learning. In Monday's assembly, I asked the children 'How old are you when you stop learning?' This sparked great discussion, with some thinking it was when you finish school, some thinking about learning in a new job and others thinking it's when you retire. We thought about what we learn outside of lessons such as maths and PE and realised that everyone is learning all the time, the children suggesting one of the most important things for adults and children is how to be kind.

I've been sharing my new hobby of pottery with the children and talking about what I am learning in my weekly lessons. The children suggested all the things I needed to improve my skills when I showed them my pot from last week (they were very kind) and how I might do this. One of my favorites was 'You just need more self-belief Mrs Hutt.' I think I possibly need a bit more than that but they certainly gave me a Monday boost!

It would be great if you could talk to your children about the things you learn day to day and some of the things you have to do to be a good learner such as listening, watching, keep trying and taking ideas from others (we call this magpieing).

Wishing you a good weekend.

Mrs. Hutt and the Nightingale Team

#### Online Safety

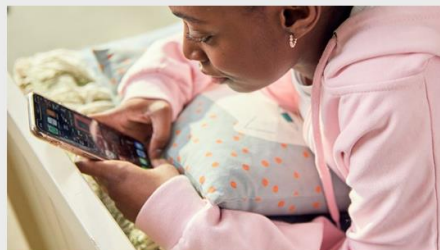
We know it can be really challenging in today's world to keep our young people safe online, particularly with a constantly growing wealth of apps and games to be aware of. The NSPCC has some fantastic guidance that may help you talk with your children or set controls on your devices to make sure your children are accessing the online world safely.

<https://www.nspcc.org.uk/keeping-children-safe/online-safety/>



#### Talking to your child about online safety

Advice on how to start the conversation and get support if you're worried.



#### Online wellbeing

Helping young people to manage their mental wellbeing online.



#### Parental controls

Get advice on setting up parental controls to help keep your child safe online.

#### Parking

Please could we remind parents again about parking in and around school at drop off. There is an increasing number of cars parking on double yellow lines, grass verges, blocking our neighbours driveways, double parking in the layby and using the staff car park. This is putting the children of Nightingale at significant risk.

We are fortunate to have a library car park around the corner for families to use. It is less than a 5-minute walk and ensure the road and paths remain clear for pedestrians to get to school safely. Our school is growing so with more children coming to Nightingale, it's vital this issue doesn't get worse.

The school will continue to seek the support of the local council and will pass on the details of cars causing obstructions. Please be reminded that the school car park is for staff, visitors and those who hold a blue badge.

## SEND

This is the link for this month's SENDIASS newsletter

<https://www.norfolksendiass.org.uk/news/newsletters/spotlightapril24-2/>

## Meet Our Staff

Mrs Boyce is the Partnership Deputy Head and Partnership SENCO.



## Tennis Club by Miss. Threadgold



Children signed up for Tennis Club, please could they come in to school in PE kit on Fridays this half term.

## Ballet Lessons

We continue to have Mrs. Harte delivering ballet lessons in the school hall after school. If you wish to sign up for your child, please contact Mrs. Harte directly.

### Coppelia Academy of Dance

Age 5 - 7 years. Mondays at 4.15pm  
In the School Hall



For more details please email: [coppeliadance@btinternet.com](mailto:coppeliadance@btinternet.com)

IDTA Examinations Available

Principal Miss E. Harte IDTA ABT. ATC.

**Local event**



**Tennis**

**TAVERHAM TENNIS CLUB COACHING  
OPEN DAY**



FAMILY TIME & COACHING TASTER SESSIONS FOR ALL THE FAMILY

**SATURDAY 11TH MAY 1.30 – 4.30PM**

Sandy Lane, Taverham, NR8 6JR

Book your free space - No previous experience needed!

[clubspark.lta.org.uk/TaverhamTennisClub](http://clubspark.lta.org.uk/TaverhamTennisClub)

## Dates for the diary

### May 2024

Monday	13.05.2024	Cricket Taster Day (Whole School to wear PE Kits)
Wednesday	15.05.2024 Changed from 22.05.24	Year R - NCMP with Vision and Hearing Screening

### June 2024

Monday - Friday	03.06.2024 - 07.06.2024	Whole School Sports Week (Please come in PE kit all week)
Wednesday	05.06.2024	Sports Day – Parents/carers are all welcome
Friday	14.06.2024	Year 1 and 2 Athletics Festival (10 children, names TBC)
Friday	21.06.2024	Whole school group photos by Vancols
Tuesday	25.06.2024	Chaffinch school trip to Sheringham Park (more information to follow)
Wednesday	26.06.2024	Kingfisher school trip to Wroxham Barns (more information to follow)
Wednesday	26.06.2024	Swallow school trip to Sheringham Park (more information to follow)
Thursday	27.06.2024	Fledglings school trip to Wroxham Barns (more information to follow)
Friday	28.06.2024	Hatchlings school trip to Wroxham Barns (more information to follow)

### July 2024

Tuesday	09.07.2024	Mini Monsters visiting
Friday	12.07.2024	EYFS Tennis Multiskills Festival (10 children, names TBC)



# Term dates



Norfolk County Council

# 2023-2024

Norfolk Model Calendar

This calendar applies to community schools, community special schools, VC schools and nursery schools and sets the days on which school transport will be provided. While most Foundation, VA, foundation special, free schools and academy trusts who are able to set their own dates, adopt the Norfolk Model, we advise you to check with your child's school before making holiday or other commitments.

September 2023							October 2023							November 2023							December 2023						
M	T	W	T	F	S	S	M	T	W	T	F	S	S	M	T	W	T	F	S	S	M	T	W	T	F	S	S
				1	2	3	2	3	4	5	6	7	8	6	7	8	9	10	11	12	4	5	6	7	8	9	10
4	5	6	7	8	9	10	9	10	11	12	13	14	15	13	14	15	16	17	18	19	11	12	13	14	15	16	17
11	12	13	14	15	16	17	16	17	18	19	20	21	22	20	21	22	23	24	25	26	18	19	20	21	22	23	24
18	19	20	21	22	23	24	23	24	25	26	27	28	29	27	28	29	30				25	26	27	28	29	30	31
25	26	27	28	29	30		30	31																			
January 2024							February 2024							March 2024							April 2024						
M	T	W	T	F	S	S	M	T	W	T	F	S	S	M	T	W	T	F	S	S	M	T	W	T	F	S	S
1	2	3	4	5	6	7				1	2	3	4					1	2	3	1	2	3	4	5	6	7
8	9	10	11	12	13	14	5	6	7	8	9	10	11	4	5	6	7	8	9	10	8	9	10	11	12	13	14
15	16	17	18	19	20	21	12	13	14	15	16	17	18	11	12	13	14	15	16	17	15	16	17	18	19	20	21
22	23	24	25	26	27	28	19	20	21	22	23	24	25	18	19	20	21	22	23	24	22	23	24	25	26	27	28
29	30	31					26	27	28	29				25	26	27	28	29	30	31	29	30					
May 2024							June 2024							July 2024							August 2024						
M	T	W	T	F	S	S	M	T	W	T	F	S	S	M	T	W	T	F	S	S	M	T	W	T	F	S	S
		1	2	3	4	5					1	2	1	2	3	4	5	6	7					1	2	3	4
6	7	8	9	10	11	12	3	4	5	6	7	8	9	8	9	10	11	12	13	14	5	6	7	8	9	10	11
13	14	15	16	17	18	19	10	11	12	13	14	15	16	15	16	17	18	19	20	21	12	13	14	15	16	17	18
20	21	22	23	24	25	26	17	18	19	20	21	22	23	22	23	24	25	26	27	28	19	20	21	22	23	24	25
27	28	29	30	31			24	25	26	27	28	29	30	29	30	31					26	27	28	29	30	31	

Key : White dates - schools open to pupils  
 Yellow dates - pupil holiday  
 Red dates - bank holiday

Five staff training days will be selected from yellow dates, we suggest 4th & 5th September, 3 January, 28th March and 22 July. Some may choose to use twilight hours for staff training instead of some or all of these.



Norfolk County Council

# 2024-2025

Norfolk Model Calendar

This calendar applies to community schools, community special schools, VC schools and nursery schools and sets the days on which school transport will be provided. While most Foundation, VA, foundation special, free schools and academy trusts who are able to set their own dates, adopt the Norfolk Model, we advise you to check with your child's school before making holiday or other commitments.

September 2024							October 2024							November 2024							December 2024						
M	T	W	T	F	S	S	M	T	W	T	F	S	S	M	T	W	T	F	S	S	M	T	W	T	F	S	S
						1		1	2	3	4	5	6					1	2	3							1
2	3	4	5	6	7	8	7	8	9	10	11	12	13	4	5	6	7	8	9	10	2	3	4	5	6	7	8
9	10	11	12	13	14	15	14	15	16	17	18	19	20	11	12	13	14	15	16	17	9	10	11	12	13	14	15
16	17	18	19	20	21	22	21	22	23	24	25	26	27	18	19	20	21	22	23	24	16	17	18	19	20	21	22
23	24	25	26	27	28	29	28	29	30	31				25	26	27	28	29	30		23	24	25	26	27	28	29
30																					30	31					
January 2025							February 2025							March 2025							April 2025						
M	T	W	T	F	S	S	M	T	W	T	F	S	S	M	T	W	T	F	S	S	M	T	W	T	F	S	S
			1	2	3	4	5					1	2					1	2		1	2	3	4	5	6	
6	7	8	9	10	11	12	3	4	5	6	7	8	9	3	4	5	6	7	8	9	7	8	9	10	11	12	13
13	14	15	16	17	18	19	10	11	12	13	14	15	16	10	11	12	13	14	15	16	14	15	16	17	18	19	20
20	21	22	23	24	25	26	17	18	19	20	21	22	23	17	18	19	20	21	22	23	21	22	23	24	25	26	27
27	28	29	30	31			24	25	26	27	28			24	25	26	27	28	29	30	28	29	30				
May 2025							June 2025							July 2025							August 2025						
M	T	W	T	F	S	S	M	T	W	T	F	S	S	M	T	W	T	F	S	S	M	T	W	T	F	S	S
			1	2	3	4						1	1	2	3	4	5	6					1	2	3		
5	6	7	8	9	10	11	2	3	4	5	6	7	8	7	8	9	10	11	12	13	4	5	6	7	8	9	10
12	13	14	15	16	17	18	9	10	11	12	13	14	15	14	15	16	17	18	19	20	11	12	13	14	15	16	17
19	20	21	22	23	24	25	16	17	18	19	20	21	22	21	22	23	24	25	26	27	18	19	20	21	22	23	24
26	27	28	29	30	31		23	24	25	26	27	28	29	28	29	30	31				25	26	27	28	29	30	31

Key : White dates - schools open to pupils  
 Yellow dates - pupil holiday  
 Red dates - bank holiday

Five staff training days will be selected from yellow dates, we suggest 2 & 3 September, 25 October, 6 January and 22 April. Some may choose to use twilight hours for staff training instead of some or all of these.