



Nightingale Infant and Nursery School

Weekly Newsletter

09.12.2022

Dear Nightingale Families,

We've had another Christmassy week at school which is getting everyone very much in the mood for the festive season. It's been so lovely to see so many families come and enjoy the EYFS performance. Thank you for coming and supporting the children. We are very much looking forward to the KS1 performance at the church on Wednesday, we hope to see you there!

There have been some concerns regarding behaviour and the use of balls on the playground before and after school. Please could we ask that you do not arrive on site earlier than needed and children are supervised until staff come to the playground to take the children inside. The gate is opened ahead of 8.50 to allow nursery parents and children access to the site before 8.45 when the morning nursery session begins. Reception and KS1 children should aim to arrive and come onto the school site between 8.45 and 8.50. School and personal balls and equipment should not be used during this time. We aim to have a member of the KS1 team on the playground at 8.50 to support with supervision.

Lastly, congratulations to Miss Roberts and Mrs Findlay. Both are expecting their first babies, due in late spring/early summer 2023. Miss Roberts currently teaches at Drayton but supports the leadership of English across both schools. As you may know, Mrs Findlay is the interim Head of School at Drayton and our SENDCo across both schools. We are currently planning the cover for these roles and will update you as soon as plans have been confirmed.

Have a lovely weekend

Mrs Hutt, Mrs Boyce & The Nightingale Team

Is it Strep A?

Look for the rash
It has a 'sandpaper' texture. On pale skin it may appear red and have a rough texture. On dark skin it may not appear red, but it will have a rough texture.



Look at the tongue
Bright red with white coating, known as 'strawberry tongue'



Other symptoms may include:

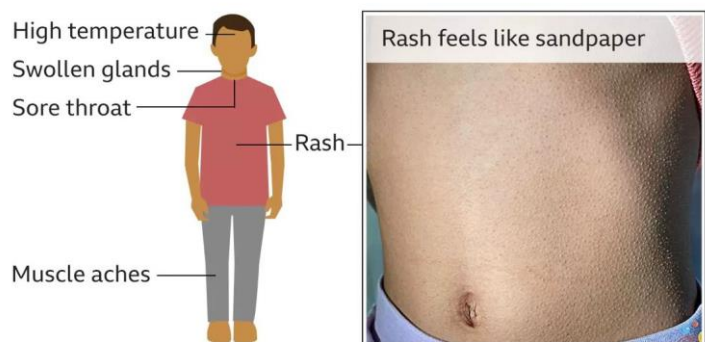
- Temperature
- Headache
- Body aches
- Feeling sick
- Flushed red cheeks
- Dehydration

It can be difficult to tell the difference between 'Strep A' (invasive Group A strep iGAS) and other infections, such as strep throat and impetigo.

The bacteria that causes these infections can usually be treated with prescribed antibiotics.

Your GP may suggest a phone consultation to avoid spreading the infection.
Call 999 or go to A&E if your child is having difficulty breathing

Strep A: What to look for



Source: Don't Forget the Bubbles Skin Deep, BBC research

A message from the Department of Education: Scarlet Fever and Group Strep A Infections

The Secretary of State for Education, Gillian Keegan, is closely monitoring the increased cases of Group A streptococcus (Strep A) and scarlet fever. As a Department, we are working closely with the UK Health Security Agency (UKHSA), who are leading on the response.

UKHSA is reporting an increased number of cases of Group A streptococcus (Strep A) compared to normal at this time of year. There is no evidence that a new strain is circulating and the increase is most likely related to high amounts of circulating bacteria and social mixing.

What are scarlet fever and Strep A?

Scarlet fever is caused by bacteria called Group A streptococci (Strep A). The bacteria usually cause a mild infection that can be easily treated with antibiotics.

In very rare occasions, the bacteria can get into the bloodstream and cause an illness called invasive Group A strep (iGAS).

What are the symptoms of Strep A/scarlet fever?

Strep A infections can cause a range of symptoms that parents should be aware of, including:

- Sore throat
- Headache
- Fever
- A fine, pinkish or red body rash with a sandpapery feel
- On darker skin the rash can be more difficult to detect visually but will have a sandpapery feel

If a child becomes unwell with these symptoms, please advise parents to contact their GP practice or contact NHS 111 (which operates a 24/7 service) to seek advice.

If a child has scarlet fever, advise they stay at home until at least 24 hours after the start of antibiotic treatment to avoid spreading the infection to others.

Encourage parents to trust their own judgement and if their child seems seriously unwell call 999 or go to A&E if:

- a child is having difficulty breathing – you may notice grunting noises or their tummy sucking under their ribs
- there are pauses when a child breathes
- a child's [skin, tongue or lips are blue](#)
- a child is floppy and will not wake up or stay awake.

FLOCK STARS OF THE WEEK



Pastoral Support

Mrs Dobson, our family liaison advisor, oversees and is able to support with attendance matters, routines and behaviour, family support or is always happy to listen and support with any concerns you or your child may have.

If you would like to make an appointment to meet with her, please contact her directly on the email address below.

Ldobson@istnorfolk.co.uk

Help with living costs

You may be struggling with living costs for a range of reasons. A leaflet from the local authority tells you what support is available and how to get advice – we have sent this alongside this newsletter. You can find this information on our school website also under parents or on the Norfolk site below.

www.norfolk.gov.uk/costofliving

If you don't have access to the internet at home, you can go online at any of our Norfolk libraries.

Parent Forum

- What improvements have you seen at the school since September?
- What do you think we could do better?
- What would you like us to invite you in to school to see?

Christmas Decorations Day



The children have been very busy this Friday making Christmas decorations in mixed up groups across the school.

The School Council have had the idea of 'selling' your child's decoration back to you and the proceeds will go to the RSPCA. Please send in a donation so your child can bring their decorations home. (The decorations will of course come home anyway !!)

Donations needed PLEASE – Christmas Crackers!!!

The school have approached a number of organisations and have managed to obtain a donation of a number of boxes of Christmas Crackers for our School Traditional Christmas Dinner. Unfortunately, we haven't managed to achieve a full donation. Would any parents kindly donate a box of Christmas Crackers to the school for children to enjoy with their Christmas meal on Wednesday. Please bring any donations to the school office. Thankyou.

Year 1 and 2 Christmas Story – St Edmunds Church

We look forward to welcoming our parents to the KS1 Christmas Story at St Edmunds Church on Wednesday 14th December 2022. Can we please ask parents not to arrive too early and to wait outside the Church on arrival until staff come to welcome you in. The balcony will be open and there will be enough room for everyone.

Job vacancy – MSA at Nightingale Infant School and Nursery

Nightingale Infant and Nursery School are looking to appoint a Midday Supervisory Assistant to join our MSA team.

Please see more information and how to apply:

<https://www.educationjobfinder.org.uk/vfjobs/midday-supervisory-assistant-225/?fromSearchPage=true>

Learning taking place in our classes this week & key messages!

EYFS



Now that the curtain has gone down on our Christmas performance it is time to reflect on all the hard work the children put into this and just how much progress they have all made, personally and emotionally. It is not easy, as an adult, to get up on stage at the right time, stand in the right place, say lines and sing songs and yet our amazing children were able to do this at such a young age. We hope you enjoyed the performance and thank you all again for your support with learning lines and songs and providing costumes.

In between rehearsals and amongst our normal phonics and maths work, we have continued to learn more about the Nativity by making a stable scene, adding and labelling characters and acting out the story. We also read the story "Bethlehem" by Fiona French and used cellophane and tissue paper to make representations of stained glass windows. And that leads us nicely into next week's learning.....

Kingfisher: We are visiting the church for Christmas celebration and song on Friday 16th

December. We would appreciate a small number of parent volunteers, if you think you can help please speak to a member of the EYFS team.

Key Stage 1



In our English sessions in key stage one some of us have been trying to build up our writing stamina, being able to write a story unaided for 20 minutes. We have used lots of different pictures over this half term to give us some inspiration. This week's picture was a flying house! The children had to remember capital letters, full stops, finger spaces, adjectives, conjunctions and even time words in their writing. This week we have also looked at alphabetical order in English.

In maths this week we have been learning about fractions. First, we investigated finding half of a range of shapes. Next, we folded and cut shapes into quarters. We have discussed what two quarters and three quarters looks like too.

We have been practising our Christmas story lots so we are ready to perform it to you at Taverham church next week. Thank you if you have sent in a costume. Please do come and see us if you have any questions regarding costumes, thank you.

Dates for the diary

December 2022

Wednesday	14.12.2022	Christmas dinner
Wednesday	14.12.2022 2.00-2.45	Year 1 & 2 Carols at St Edmunds Church – Parents welcome
Friday	16.12.2022	School closes for Christmas Holiday

January 2023

Wednesday	04.01.2023	School re-opens for Spring term
-----------	------------	---------------------------------

Thursday	26.01.2023	Whole school PE day, whole school to wear PE kits
February 2023		
Thursday	09.02.2023	SESMA Taster Sessions, whole school to wear PE kits
Friday	10.02.2023	School closes for half term
Monday	20.02.2023	School re-opens
Wednesday	22.02.2023	Year 2 Speed Stacking Festival (10 children attending)
Monday	27.02.2023	KS1 Cricket Festival (20 children attending)
March 2023		
Thursday	23.03.2023	Multi-skills PE Day in school, Year 1 / 2 to wear PE kits
Thursday	30.03.2023	KS1 Cross Country (16 children attending)
Friday	31.03.2023	School closes for Easter holiday
April 2023		
Tuesday	18.04.2023	School re-opens for Summer term
Thursday	27.04.2023	KS1 Tri Golf (10 children attending)
May 2023		
Friday	26.05.2023	School closes for half term
June 2023		
Monday	05.06.2023	School re-opens
Monday	05.06.2023	Year R – vision and hearing screening
Tuesday	06.06.2023	Year R – vision and hearing screening
Thursday	08.06.2023	Vancols – Group School Photos
Friday	30.06.2023	KS1 Athletics (10 children attending)
July 2023		
Thursday	06.07.2023	EYFS Tennis Multiskills Festival (10 children attending)
Thursday	06.07.2023	Golf Activity Day in school, whole school to wear PE kits
Friday	21.07.2023	School closes for summer holiday

Term dates

White dates - schools open to pupils
 Yellow dates - pupil holiday
 Red dates - bank holiday



Norfolk County Council

2022-2023

Norfolk Model Calendar

This calendar applies to community schools, community special schools, VC schools and nursery schools and sets the days on which school transport will be provided. While most Foundation, VA, foundation special, free schools and academy trusts who are able to set their own dates, adopt the Norfolk Model, we advise you to check with your child's school before making holiday or other commitments.

M	T	W	T	F	S	S
			1	2	3	4
5	6	7	8	9	10	11
12	13	14	15	16	17	18
19	20	21	22	23	24	25
26	27	28	29	30		

M	T	W	T	F	S	S
					1	2
3	4	5	6	7	8	9
10	11	12	13	14	15	16
17	18	19	20	21	22	23
24	25	26	27	28	29	30
31						

M	T	W	T	F	S	S
	1	2	3	4	5	6
7	8	9	10	11	12	13
14	15	16	17	18	19	20
21	22	23	24	25	26	27
28	29	30				

M	T	W	T	F	S	S
			1	2	3	4
5	6	7	8	9	10	11
12	13	14	15	16	17	18
19	20	21	22	23	24	25
26	27	28	29	30	31	

M	T	W	T	F	S	S
						1
2	3	4	5	6	7	8
9	10	11	12	13	14	15
16	17	18	19	20	21	22
23	24	25	26	27	28	29
30	31					

M	T	W	T	F	S	S
		1	2	3	4	5
6	7	8	9	10	11	12
13	14	15	16	17	18	19
20	21	22	23	24	25	26
27	28					

M	T	W	T	F	S	S
		1	2	3	4	5
6	7	8	9	10	11	12
13	14	15	16	17	18	19
20	21	22	23	24	25	26
27	28	29	30	31		

M	T	W	T	F	S	S
					1	2
3	4	5	6	7	8	9
10	11	12	13	14	15	16
17	18	19	20	21	22	23
24	25	26	27	28	29	30

M	T	W	T	F	S	S
1	2	3	4	5	6	7
8	9	10	11	12	13	14
15	16	17	18	19	20	21
22	23	24	25	26	27	28
29	30	31				

M	T	W	T	F	S	S
			1	2	3	4
5	6	7	8	9	10	11
12	13	14	15	16	17	18
19	20	21	22	23	24	25
26	27	28	29	30		

M	T	W	T	F	S	S
					1	2
3	4	5	6	7	8	9
10	11	12	13	14	15	16
17	18	19	20	21	22	23
24	25	26	27	28	29	30
31						

M	T	W	T	F	S	S
	1	2	3	4	5	6
7	8	9	10	11	12	13
14	15	16	17	18	19	20
21	22	23	24	25	26	27
28	29	30	31			

Key : White dates - schools open to pupils
 Yellow dates - pupil holiday
 Red dates - bank holiday

Five staff training days will be selected from yellow dates, we suggest 2nd & 5th September, 3rd January, 17th April and 24th July. Some may choose to use twilight hours for staff training instead of some or all of these.



Norfolk County Council

2023-2024

Norfolk Model Calendar

This calendar applies to community schools, community special schools, VC schools and nursery schools and sets the days on which school transport will be provided. While most Foundation, VA, foundation special, free schools and academy trusts who are able to set their own dates, adopt the Norfolk Model, we advise you to check with your child's school before making holiday or other commitments.

M	T	W	T	F	S	S
				1	2	3
4	5	6	7	8	9	10
11	12	13	14	15	16	17
18	19	20	21	22	23	24
25	26	27	28	29	30	

M	T	W	T	F	S	S
						1
2	3	4	5	6	7	8
9	10	11	12	13	14	15
16	17	18	19	20	21	22
23	24	25	26	27	28	29
30	31					

M	T	W	T	F	S	S
		1	2	3	4	5
6	7	8	9	10	11	12
13	14	15	16	17	18	19
20	21	22	23	24	25	26
27	28	29	30			

M	T	W	T	F	S	S
				1	2	3
4	5	6	7	8	9	10
11	12	13	14	15	16	17
18	19	20	21	22	23	24
25	26	27	28	29	30	31

M	T	W	T	F	S	S
1	2	3	4	5	6	7
8	9	10	11	12	13	14
15	16	17	18	19	20	21
22	23	24	25	26	27	28
29	30	31				

M	T	W	T	F	S	S
			1	2	3	4
5	6	7	8	9	10	11
12	13	14	15	16	17	18
19	20	21	22	23	24	25
26	27	28	29			

M	T	W	T	F	S	S
				1	2	3
4	5	6	7	8	9	10
11	12	13	14	15	16	17
18	19	20	21	22	23	24
25	26	27	28	29	30	31

M	T	W	T	F	S	S
1	2	3	4	5	6	7
8	9	10	11	12	13	14
15	16	17	18	19	20	21
22	23	24	25	26	27	28
29	30					

M	T	W	T	F	S	S
		1	2	3	4	5
6	7	8	9	10	11	12
13	14	15	16	17	18	19
20	21	22	23	24	25	26
27	28	29	30	31		

M	T	W	T	F	S	S
					1	2
3	4	5	6	7	8	9
10	11	12	13	14	15	16
17	18	19	20	21	22	23
24	25	26	27	28	29	30

M	T	W	T	F	S	S
1	2	3	4	5	6	7
8	9	10	11	12	13	14
15	16	17	18	19	20	21
22	23	24	25	26	27	28
29	30	31				

M	T	W	T	F	S	S
			1	2	3	4
5	6	7	8	9	10	11
12	13	14	15	16	17	18
19	20	21	22	23	24	25
26	27	28	29	30	31	

Key : White dates - schools open to pupils
 Yellow dates - pupil holiday
 Red dates - bank holiday

Five staff training days will be selected from yellow dates, we suggest 4th & 5th September, 3 January, 28th March and 22 July. Some may choose to use twilight hours for staff training instead of some or all of these.